

# Castle WATCH

A Joslyn Castle Publication

Winter 2017







**BOARD OF DIRECTORS**

- Mary Jewell,  
President
- Linda Andersen
- Nate Bronson,  
Treasurer
- Ron Crampton,  
VP Grounds
- Polo Davis
- John Dechant
- Bill Gallup
- Matthew Henkes
- Ric Klaas
- Betsy Kosch
- George Kleine,  
Past President
- Sharon McGill,  
Secretary
- Mary Parrish
- Francie Prier
- Joan Standifer
- Matt Wegener,  
VP Property Management
- Laura Worick,  
Guild Representative

**ADVISORY COUNCIL**

- David Ambrose
- Brad Ashford
- Doug Bisson
- Carol Gendler
- George Haecker
- Margie Heller
- Tim Holland
- George Kleine
- David Levy
- B. J. Reed
- Connie Spellman
- Bryan Zimmer

**CASTLE GUILD BOARD**

- Laura Worick,  
President
- Pat Boettger,  
Special Projects
- Polo Davis,  
Boutique
- Kate Grabill,  
Special Projects
- Annette Huff,  
Treasurer
- Julie Jurgensen,  
VP Social
- Teddi Kennedy,  
VP Fundraising & President-Elect
- Maureen Lee,  
Membership
- Sharon McGill,  
Annual Luncheon
- Jeanie Owen,  
Advisor
- Edi Pierce,  
VP Education
- Francie Prier,  
Boutique
- Jackie Quigley,  
Corresponding Secretary
- Monte Thompson,  
Annual Luncheon
- Susan Tracy,  
Assistant Treasurer

**CASTLE STAFF**

- Catherine Demes Maydew,  
Interim Executive Director
- Martin Digiacommo,  
Facilities Assistant
- Trevor King,  
Director of Buildings & Grounds
- Sherri Moore,  
Director of Events
- Mary Parrish,  
Reservations & Receivables
- Amy Trenolone,  
Director of Marketing & Development

**TABLE OF CONTENTS**

Message from the President . . . . . 2

Message from the Interim Executive Director . . . . . 2

Message from the Guild President . . . . . 2

‘Tis the Season . . . . . 3

A Piano for the Castle . . . . . 3

Heating System Gets an Upgrade . . . . . 4

New Exterior Lighting. . . . . 4

Joslyn Castle by the Numbers . . . . . 5

Murder Mystery . . . . . 5

Spring Lecture Series . . . . . 6

Joslyn Castle Cruise . . . . . 6

Education Corner: A Look Back . . . . . 7

Development Corner: A Look Ahead . . . . . 7

Calendar of Events . . . . . 8

Castle Conservators . . . . . 9

Restoration Exchange Omaha . . . . . 9

Castle Donors . . . . . 10

2016 Revenue Distribution. . . . . 10

Omaha Gives. . . . . Back Page

Become a Castle Friend . . . . . Back Page

*Thank you to Jim Fogarty for the lovely cover photo and photo below.*



## A MESSAGE FROM THE CASTLE BOARD PRESIDENT, MARY JEWELL



Happy New Year! I hope that attending events at Joslyn Castle is on your list of resolutions for 2017. There are so many programs planned for this upcoming year—more Unlocked tours, the always sold out Murder Mystery, this year offering more dates, the new Joslyn Castle Cruise, the Literary Festival, and not to get too far ahead of ourselves, the Historic Home Tour.

If getting more exercise is one of your resolutions, why not consider a walk on the grounds. The Joslyn Castle Estate, also known as Lynhurst, was the first to be designated a landmark affiliate site when the Nebraska Statewide Arboretum was established. Watch for programs this spring about some of the trees on the grounds and how to take care of your own trees.

If you want to be like George and Sarah Joslyn and give back to the community, contact our staff about the many ways that you can volunteer your time, from helping in the office to giving tours, to pulling weeds. Each volunteer makes a difference.

The mission of the Joslyn Castle Trust is to restore and preserve the buildings and its grounds as a part of Omaha's history. But the Joslyns also wanted to make sure that their home and estate were open to the community, so help us to achieve our mission by attending events at the Castle and bringing your family and friends. Joslyn Castle is supported by private and family foundations and individual donors. Revenue earned from rentals and program income also help us sustain our operations. We invite you to be our partner in these efforts.

I hope to see you at the Castle in 2017.

## A MESSAGE FROM THE INTERIM EXECUTIVE DIRECTOR, CATHERINE DEMES MAYDEW



Happy Winter and Happy 2017! As we turn over the New Year on the calendar we also are turning over our new year for programming, budget, and board here at the Castle. The Castle welcomes new board members this month, and we are excited to work with them. Our new board members are Linda Andersen – CBS Real Estate, Betsy Kosch – Joslyn Elementary School Principal, Matthew Henkes – Iowa West Foundation Director of Grants Programs, and John Dechant – Legacy Preservation Senior Writer.

Again we are overwhelmed by the sold out Joslyn Castle Unlocked Events that are planned for 2017. If you haven't had a chance to experience the staff's in-depth tour of the Castle and the deep history shared about Sarah and George, try to catch an open seat.

Our focus in 2017 is to make the Joslyn Castle Omaha's Premier Historical Landmark. We are developing our educational plan and believe that this is well supported by the turn out for our Unlocked Events. Stay tuned for additional educational events in this coming year.

Finally the staff offices will be moving to the second floor of the Carriage House in late February. Look for us there when you are on the grounds. We are designing something special for the annex, now renamed "The Greenhouse," a special space later this year.

## A MESSAGE FROM THE GUILD BOARD PRESIDENT, LAURA WORICK



Happy New Year! As the incoming Castle Guild president I am excited for 2017. Our Guild is as strong as ever and we are making big plans for the future. As we look forward to the impact we wish to make this year, I want to take a moment to look back at the Guild's accomplishments in 2016.

Under the leadership of President Jeanie Owen, our Guild made a real impact on the Castle over the past year. Some of our accomplishments were less noticeable. For example the Guild purchased a second refrigerator to assist in food and beverage storage for events and assisted in the purchase of a garden tractor for the grounds committee.

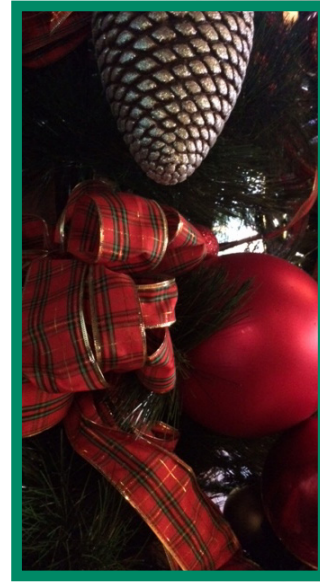
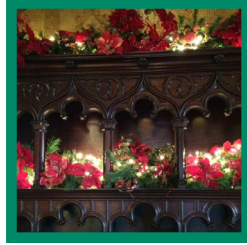
Of those accomplishments that were more obvious, the Guild contracted for the brick patio and garden installation at the bridge and replaced three chandeliers. The new chandeliers are located in the grand hall, the ladies room and, most notably, in the dining room. For those readers who have been following the 'saga of the lost chandelier' you are aware that the original fixture has been missing for several years. In spite of many conversations and even a World-Herald article requesting assistance in locating it, the search has so far been unsuccessful. However, thanks to the efforts of one especially

persistent Guild member, a similar piece was found. While the replacement is not an exact replica, it certainly fits the period and bears a striking resemblance to the Joslyn original.

It is my goal to help the Joslyn Castle Guild continue its mission-driven work of preserving and restoring the Castle in 2017 and beyond. I look forward to the challenges that lie ahead and hope to work with many of you.







## 'Tis The Season

Designers Susan McMannama of Susan McMannama Interiors, Diane Luxford of D-Lux Interiors, and Ric Klaas of Omaha Interiors & Design Inc., once again donated their time, talent, and treasures to deck the halls of the Joslyn Castle for the 2016 holiday season. The festive mood was set as the Castle began to glisten and glow throughout the first floor.

The rooms were beautifully adorned with bountiful decorations making each one a wonderful sight to behold. The designers' imagination and expertise created a look in each room thoughtfully tailored to the décor of those rooms that once welcomed many visitors to the Joslyn home. As entertaining was at the heart of the Castle, where frequent concerts entertained family and friends, the greenery in the Music Room and Balcony were draped in musical ribbon and embellishments. The

tree in the Morning Room had twigs of laurel leaves intertwined in its branches, mimicking the wallpaper border that encircles the room. The Gold Room, one of the most elaborate rooms in the Gilded Age home, boasted a tree rich in beaded, sequined, and glitter ornamentation. The red poinsettia, symbolizing good cheer and success, was fittingly nestled throughout the Dining Room where many guests had gathered spreading holiday cheer to those around them.

Susan, Diane, and Ric spent a week making the Joslyn Castle merry and bright. It was the perfect backdrop for our Patron Party, Historic Home Tour & Boutique, Holiday Unlocked Tour, and many holiday party rentals. Our patrons were enchanted and amazed at the beauty of the Castle, exclaiming it was the most beautiful it has ever been. We cannot thank Susan, Diane, and Ric enough for their thoughtfulness and generosity. Thank you!

## A PIANO FOR THE CASTLE

We have received a donation of an antique piano from Kevin Lloyd in Greenwood, Nebraska, and we are currently exploring the perfect spot for it. The piano is a Chickering Square piano and it was originally purchased by G. N. Thackerburg of Suspension Bridge, New York, on November 18, 1864. It was given to Mary Sanderson as a wedding gift when she married Rev. F. H. Sanderson on September 10th, 1879. The present owner, who donated the piano to the Castle, acquired it in the summer of 1975.

The piano is 80" long, 42" deep, and weighs 740 pounds. When new in 1864 the piano cost \$725.00. The finish on the rosewood case is in excellent condition and the ivories are original. The only restorations are new dampers and new keyboard felts installed by the present owner. While it is playable, it does need a little work on the upper dampers and tuning. By the time you read this it should be tuned and playable.

While the Joslyns owned at least two pianos that are visible in a picture of the music room, neither of them is similar to the Chickering we have accepted. However, because it was built in 1864, it could very well have fit into their music room with ease. We are extremely grateful to Mr. Lloyd for donating this piano to the Castle. It is a beautiful reminder of a bygone era.

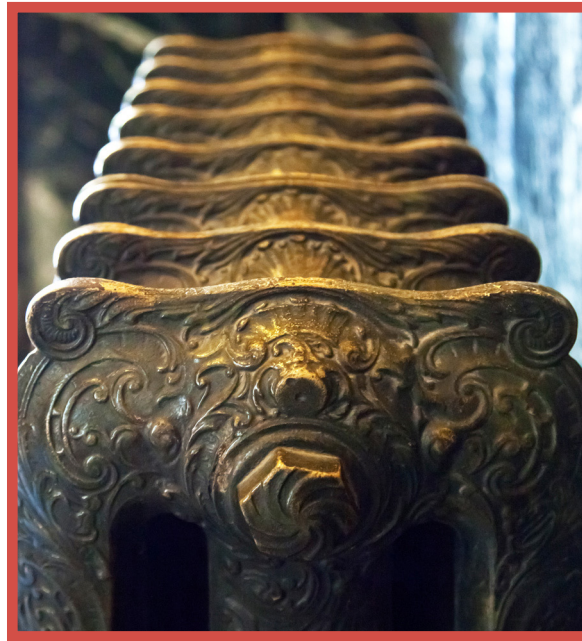




## OUR HEATING AND COOLING SYSTEM NEEDS AN UPGRADE TO MODERN TIMES

We are very excited about a new project we have started – that has been needed for some time. This winter we have begun the process of upgrading the Castle's Heating and Air Conditioning System.

The Castle was originally designed with a state of the art heating system. The gas fired boilers were housed in the greenhouse and hot steam was pumped through underground tunnels to the Castle to feed the cast iron radiators. These radiators were on every floor from George's "man cave" basement rooms to the third floor ballroom; including the servant's quarters. This heating system meant that the fireplaces did not need to function as a source of heating but could be decorative and gas fed from the beginning. This state of the art heating system was installed in 1903 when the house was built.



outside air-cooled condensing unit. The most recent upgrade to this entire system was in 1994 before the State of Nebraska turned the Castle over to the Joslyn Castle Trust. In order to heat the Castle the boilers must be turned on. Once on, we cannot switch the system over to air conditioning without completely turning off the system. In other words, only one system can be operational at a time. According to a study performed in the year 2000, the heating and cooling systems were operational and code-compliant. This year, however we incurred a \$14,000 repair that was necessary to keep the chiller condenser pump operational. Unexpected repairs like this are hard on our operating budget. Per analysis recently, the existing HVAC system is nearing the end of its useful life and needs to be replaced.

Fast forward to the decades when the Omaha School board was housed on the Castle grounds. The boiler system was overhauled and replaced with a current HVAC system that could also cool the Castle in the warm summer months. There are currently 17 individual fan coil units located throughout the building and third floor. The heat is provided from three sequential boilers located in the basement of the Castle. Cooling is provided by an electric, direct expansion,

Today we are working with Alvine Engineering to assess and plan for a new heating and air conditioning system that is again state of the art.

To reduce our energy consumption and our "carbon footprint" we are moving toward a more fuel efficient system system. By doing so, we will be both reducing our energy use and saving money annually. The anticipated energy savings for Castle is \$11,000 annually.

## NEW EXTERIOR LIGHTING

The 5.57 acres of the Joslyn Castle property are always open to the public as a wonderful, accessible park and green space. Each day (weather permitting) we see people walking their dogs, enjoying a picnic, sketching their surroundings, or simply marveling at the abundant plants and flowers.

In the past, the exterior lighting on the Castle grounds was very limited. Once the sun would set, there would be pockets of dark spaces. Due to the generosity of the Sherwood Foundation and Douglas County Visitor Improvement Fund, we are thrilled to announce the installation of lights throughout the property and parking areas. These lights are primarily for safety and security, allowing guests to the Castle greater visibility at night.

The lights will also allow those driving by a better opportunity to see the Castle from the road. We want all of our guests to the Castle, whether you are here for an event, attending one of our programs, or simply out for a stroll to feel safe and secure.

During your next visit to the Castle, we are sure you will notice a difference!



*Photo of the installation progress taken on January 4, 2017*



## JOSLYN CASTLE BY THE NUMBERS 2016

The Joslyn Castle welcomes, entertains, and educates many guests throughout the year. From charter bus group tours to students of all ages, each person walks away with an appreciation of Omaha's Castle. Each guest at one of our programs or events helps in our mission to preserve the home and legacy of the Joslyns. When the opportunity presents itself, we will take the story of George and Sarah and their Castle on the road. Here is a snapshot of this past year, by the numbers...

160

Experienced  
the Castle on  
the Road

230

Kiewit Kids  
Summer Fun  
Students

350

Unlocked  
Attendees

630

Turkey Trot  
Walkers /  
Runners

727

Charter bus  
tour guests

757

Students  
Visited the  
Castle

1,103

Guests to  
Murder  
Mystery,  
Historic Home  
Tour, Literary  
Festival

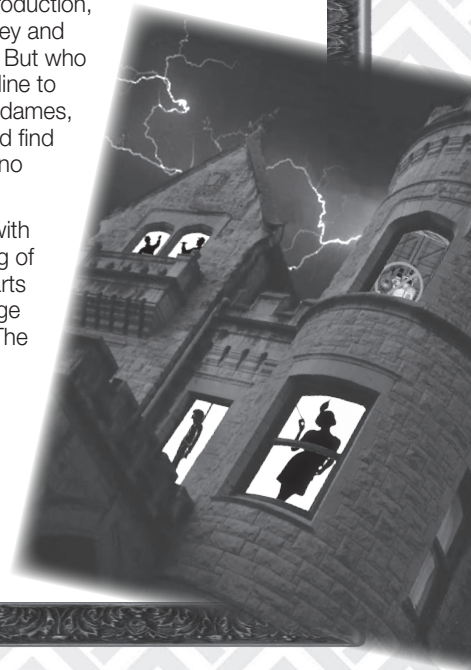
### 13th Annual Joslyn Castle MURDER MYSTERY

# LAST KILL & TESTAMENT

## MURDER MYSTERY AT THE CASTLE

WHO DUNNIT?? Join us to answer that infamous question at the 13th Annual Murder Mystery at the Joslyn Castle. "Last Kill & Testament" is the name of the play, and prohibition is the name of the game. The backdrop will be a running speakeasy in 1931 as the Castle opens its doors on Friday, February 24th, Saturday, February 25th, Friday, March 3rd, and Saturday, March 4th. Starring the talented Joslyn Castle Players, this original performance has been written by cast veteran Katie Robbins Case and directed by the incomparable Colleen Fogarty. In this production, word has it that Aunt Florence has money and everyone wants it; desperately wants it! But who is Aunt Florence's favorite and who's in line to get a piece of the pie? Fellas grab your dames, get dolled up, head over to our joint, and find out the outcome to this mystery. Sorry, no bootleggers allowed.

The Murder Mystery entertains guests with fun and intrigue in the mysterious setting of the Castle by blending great theatrical arts and community engagement with George and Sarah Joslyn's magnificent home. The program serves as a great way to bring new visitors to the Castle. The ticket cost is \$85 per person, which includes a delicious dinner and this fabulous production. Tickets can be purchased via the Joslyn Castle website, [www.joslyncastle.com](http://www.joslyncastle.com), or by calling 402.595.2199.





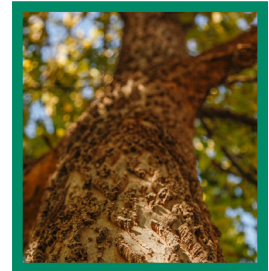
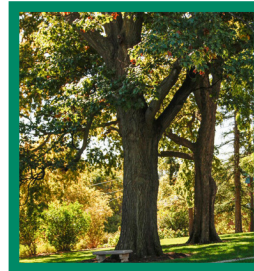
## SECOND ANNUAL SPRING LECTURE SERIES – CARING FOR YOUR TREES

This April the Castle will again be alive with discussion about your gardens. This year our series will be centered on caring for your trees. Following the success of last spring's inaugural Garden Lecture Series, we are planning for four events on Wednesday evenings in April where you can learn tips and techniques to care for and protect one of your most significant landscape investments – your trees.

Joslyn Castle is the site of some truly special trees including Nebraska's largest English Oak. Phil Pierce, the Castle's consulting arborist, has lined up some great speakers that will surely educate and inspire you. The lecture series will culminate with a walking tour of the Castle grounds with a special tree planting on the Castle grounds in honor of Arbor Day.

Each lecture will be free to the public with a suggested goodwill donation. Doors will open at 6:30 p.m. each evening, with the presentation beginning at 7 p.m. The scheduled dates and speakers are April 5 – Justin Evertson; April 12 – John Royster; April 19 – Steve Rhody; and April 26 – Phil Pierce. We look forward to seeing you!

New this year, we have set up an online community through Google Docs where you can weekly track observations and ask questions about your own trees. Find us at: <https://docs.google.com/spreadsheets/d/1aspX3MP2exw2a3t9WRnN8cXAOkdFSb2kPMc8O2rLWTO/pubhtml>.



- April 5: Justin Evertson: "Old Trees, Young Trees – We Need Them All"
- April 12: John Royster: "The Cultural Landscape – Sorting Fact from Fiction on the Design and Development of Joslyn Castle's Landscape"
- April 19: Steve Rhody: "Tree Identification and Morphology – What is Your Tree Doing This Spring?"
- April 26: Phil Pierce: Joslyn Castle Grounds Tree Tour and Planting

## JOSLYN CASTLE CRUISE

Mark your calendars as we present a new spin on our car show. The 'Joslyn Classic Cruise' is rewinding up to make its debut on Sunday, September 3, 2017. Think you've already seen all there is to see? Well, our wheels have been turning so sit back and get ready for something new as we welcome all classes and all years. This year's Cruise will be receiving a frame-off restoration and will include original and concours classic cars, plus high-caliber, high-interest resto-classics, street coupes, roadsters, competition vehicles, resto-mods, supercars, and other one-of-a-kind vehicles.

Join us from 12 p.m. – 4 p.m. and enjoy our beautiful gardens as you stroll among the various types of cars, trucks, and motorcycles that will be on display. Enjoy stories and conversation with the car owners and appreciate what makes their vehicle special. Food trucks will be gearing up to serve you great food to keep you fueled up throughout the day.

Admission to view the 2017 Joslyn Castle Cruise is free. Tours of the Castle will be available for our standard tour Sunday admission of \$10 per person / \$8 for students, seniors and students at 1, 2 and 3 p.m.



If you have a vehicle you are interested in bringing to the first Joslyn Castle Cruise, visit our website, or call 402.595.2199. Again, all vehicle types are welcome!



## EDUCATION CORNER: A LOOK BACK

As we enter 2017, the Joslyn Castle staff is undertaking an increased focus on education. Part of that effort includes better sharing the story of George and Sarah Joslyn with the community. George and Sarah lived interesting lives and made significant business, social, civic and philanthropic contributions to our community. We look forward to sharing more of their legacy with you in future issues of our Castle Watch newsletter.

### Did you know?

- On January 21, 1909: As part of his \$25,000 gift to the Child Savings Institute, it is announced that George paid \$13,000 for seven lots on the west side of 26th Street.
- On February 25, 1905: Sarah and George opened their home for a “large and brilliant dancing party.”
- On March 12, 1929: The American Legion names Sarah as “Omaha’s Most Valuable Citizen for 1928” due to her significant philanthropic contributions.
- On April 1, 1893: George pays \$65,000 for the Sutphen property where the Castle would be constructed in 1903.



*Photos of the Joslyn Castle Conservatory  
courtesy of Maureen Fritts.*

## DEVELOPMENT CORNER: A LOOK AHEAD

The Joslyn Castle relies on the support of many private foundations, corporations, businesses and individual donations to help us preserve and share the Castle, its gardens and grounds, and the history of the Joslyns with the community. It is our goal to offer unique programming and educational experiences that will draw people to the Castle to experience how special this place is and what a significant role it played in the history of our city.

If an individual or organization is interested in supporting our work, there are currently three primary channels of support:

**Castle Conservators** – this group of donors provide over-arching annual programming support for Joslyn Castle’s four flagship programs – Murder Mystery, Car Show, Literary and Arts Festival, and Historic Home Tour – as well as for tours, student events, lectures, and other artistic programming.

**Capital Projects** – donors can direct their support toward specific restoration or preservation projects that are underway or planned at the Castle. For 2017, we will be exploring replacing our 1994 HVAC system, refinishing the floors, and repairing the conservatory. There are also always smaller projects that arise.

**Individually Directed Support** – As a Castle Friend, a member of our Guild, or gifts made in memory of an event or individual, these funds provide support for specific projects or are unrestricted to be used as most needed within the organization.

We have also recently created the Lynhurst Legacy Restricted Fund where planned giving donations can be designated if desired. In the fall of 2016, we celebrated the 100th anniversary of the death of George A. Joslyn; many donations were received that were placed into this fund to serve as seed money for a future endowment for the Castle.

By donating to the Castle, we commit to providing you with a clear understanding of where and how your funds are being used. We sincerely thank each of you who choose to support the Joslyn Castle. George and Sarah Joslyn were Omaha’s earliest philanthropic couple. By preserving their home and legacy, we strive to keep that spirit of generosity alive in the city they loved so very much.



# CALENDAR *of* EVENTS

## TOUR SUNDAYS

First and Third Sundays of each month – 1:00, 2:00, & 3:00 p.m.

Closed – Sunday, March 5th, 2017

## WEEKDAY TOURS

Scheduled by appointment

**Friday, February 24th – Saturday, February 25th,**

**Friday, March 3rd – Saturday, March 4th**

## 13TH ANNUAL MURDER MYSTERY

Doors open at 6 p.m. Performance begins at 7 p.m.

**Wednesdays, April 5th, 12th, April 19th, April 26th:**

## CARING FOR YOUR TREES LECTURE SERIES 7 p.m.

**Sunday, September 3rd:**

## JOSLYN CASTLE CRUISE 12 p.m. to 4 p.m.

**Wednesday, September 27th – October 5th:**

## JOSLYN CASTLE LITERATURE AND ART FESTIVAL

**Dates TBD – November 2017:**

## HISTORIC HOME TOUR & BOUTIQUE

**Thursday, November 23rd:**

## TURKEY TROT

5k Run/Walk – 9 a.m. at Midtown Crossing

Reservations and tickets to events are available by calling 402.595.2199 or online at [joslyncastle.com](http://joslyncastle.com).





## *Thank you to our Castle Conservators and your support of our 2017 programming!*

### Stakeholders:

- Mammel Family Foundation
- Shirley and Dan Neary

### Caretakers:

- The Castle Guild
- McGowan Family Foundation
- Diane Harder



Castle Conservators directly support our annual Murder Mystery, Joslyn Castle Cruise, Literary and Arts Festival, Historic Home Tour & Boutique, Joslyn Castle Unlocked, and our education tours and programs.

We are still accepting support for 2017. To learn more, contact Catherine at 402.595.2199 or [cmaydew@joslyncastle.com](mailto:cmaydew@joslyncastle.com).

February 24-March 4, 2017



**MURDER  
MYSTERY**

September 3, 2017



**JOSLYN CASTLE  
CRUISE**

October 2017



**LITERATURE &  
ART FESTIVAL**

November 2017



**HISTORIC HOME TOUR  
& BOUTIQUE**

## THOUGHTS FROM OUR TENANT RESTORATION EXCHANGE OMAHA

Since our formation in July 2013, Restoration Exchange Omaha (REO) has called the Joslyn Castle campus home. We started with a small, relatively unknown space in the Annex reached only by a set of steep, winding stairs. The second floor niche gave us space for a desk, a work table, and a place to hold 50 years' worth of Landmarks Inc. archives we inherited as part of the merger of three preservation groups to form REO. In July we moved to the former apartment space on the east side of the Annex. We spruced up the space and took off the blinds that hid the space from the public for years.

As lovers of historic places, our group could not ask for a better view out our one-story windows. We love taking our visitors on a tour of the

Castle. It gives us an excellent opportunity to explain the difference between preserving, restoring, and rehabilitating a building. Joslyn Castle is a rare example of a building preserved. Visitors can walk in and experience the same materials and craftsmanship that was used to build this mansion in 1903. Intricate tile mosaics, hand carved woodwork, forged metal work-- it is all there. The awe on our visitors' faces as we take them from room to room reminds us why we love and need to save these architectural gems. Omaha has lost too many of its Gold Coast mansions. We all need to work to preserve Joslyn Castle, tell its stories, and make it relevant for today. We are thankful to the donors, staff, and volunteers who make that happen every day.





## CASTLE DONORS

Thank you to the following for their support.

Donations from August 2016 – December 2016.  
We apologize for any omissions.

### YEAR END DONATIONS

Dr. David Ambrose  
Bluestem Prairie Foundation  
My Boes  
Patricia Boettger  
Edson and Sally Bridges  
Bob Broom and Mary Clarkson  
Cabinet Factory Outlet Plus  
James and Mary Chamberlain  
Joyce Christensen  
Hal and Mary Daub  
Claudia Deeb  
Theresa Dreismeier  
Michael Faust  
Nancy Fogarty  
Joan Gibson and Donald Wurster  
Charles Gifford, Gifford Foundation Inc.  
Joan Goldapp  
Michael and Kathy Gross  
Tony and Dory Hallac  
David Harding  
Verna Headley  
Margie Heller  
Don and Jan Hinds  
Robert and Lorraine Jeffus  
Mary Jetton  
Jensen Charitable Trust  
Rod and Mary Jewell  
Daniel and Lisa Kammerer  
Ruth and Jim Keene  
George Kleine  
Brad Kothenbeutel  
Barbara and Marshall Kushner  
Bill and Kathy Lake  
Paige Lewis  
William Lydiatt  
Ms. Mele Mason  
Susan Mayberger  
Judy McCaig  
George and Carolyn McDonald  
Sharon McGill  
Monty McClean  
John and Jackie McLellan  
Kathy McGill Micheels  
Peggy Pavlik  
John and Kathleen Ransom  
Ed and Elaine Russell  
Helen Sawtell  
Kay Schilling  
Stephen Scherr  
Julie Schroeder, Julie Morsman  
Schroeder Foundation  
Joel and Cleone Sebek  
Susie Severson and Paul Otero  
Michele Silberstein  
Eve Simon  
Mary Ann Strasheim  
Michael and Judy Thesing

## DONATIONS IN HONOR OF GEORGE JOSLYN

PERMANENTLY RESTRICTED  
Thomas and Mary Lou Gouttierre  
Bonnie Hickey  
Bill and Susan McNichols  
Eli McNichols  
Larry and Lannie McNichols  
Francie Prier  
Judith Wickersham

TEMPORARILY RESTRICTED  
Gary and Julie Jurgensen  
Monte Thompson  
Richard White

UNRESTRICTED  
Barbara Bakhit  
Luther Birdzell  
Sandi and Bill Bruns  
Deb Covert  
Hal and Mary Daub  
Polo Davis  
J. William Gallup  
Joan Goldapp  
Wanda Gottschalk  
Kathy Gross  
Mary Jo Havlicek  
Annette Huff  
Mary and Tom Kerr  
Ric Klaas and Fella Vaughn  
Carol Evans Lynch  
Mary Moberg  
Brad and Sherri Moore  
Omaha Electric Service  
Dee Owen  
Jeanie Owen  
Jennifer Pansing  
Ann Pape  
Mary and Richard Parrish  
Cynthia Peacock  
Bruce and Mary Anne Ramge  
BJ Reed  
Louie and Kathie Rotella  
Barbara and Dan Scanlan  
Shirley Siebler  
Laurie Smith Camp  
John and Shirley Thorogood  
Judy Torrens  
Susan and Jim Tracy  
Dorothy Tuma  
Maureen and Jim Waldron  
Laura Worick  
Faye Young

### NEBRASKA ARTS & LITERARY FESTIVAL

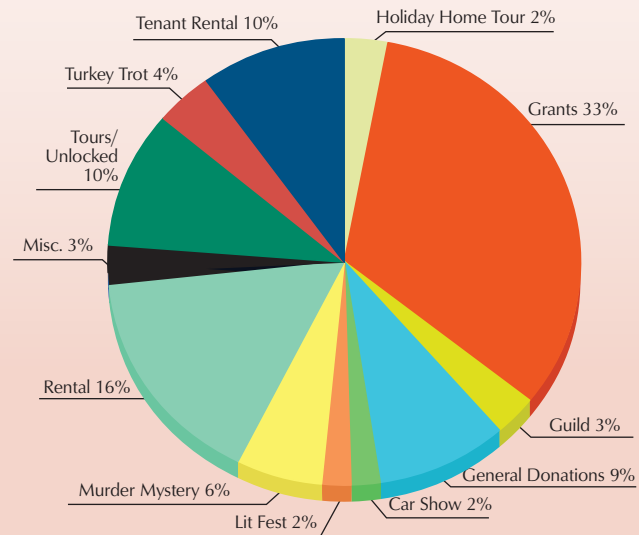
Ric Klaas, Omaha Interiors and Design  
Ron and Meri Crampton  
Element Omaha  
George and Judy Haecker  
Steve and Annette Huff  
Humanities Nebraska  
J. William Gallup

George Kleine  
Sharon McGill  
Dan and Shirley Neary  
Nebraska Arts Council  
Mary and Richard Parrish

### GENERAL SUPPORTERS

Mary Ann Bamber  
Drew Blossom  
KPMG  
Cheryl Martin Design Studio  
Christian Nobel Furs LTD  
Lizzy Gilbert  
Lips That Last  
Rooney Gray  
MAM Candy  
Ric Klaas, Omaha Interiors and Design  
George Kleine  
Karan Llewellyn  
Major Isaac Sadler La Belle Vue Chapter  
Susan McMannama  
Monte Montelegre  
Lucy Newberry  
Egis Technologies  
Narwicz Design  
Richard and Mary Parrish  
Francie Prier  
She.la  
Sarah Spooner  
Four Sister Boutique  
Kathy and Kurt Strawhecker  
Nick Strawhecker, Dante Ristorante Pizzeria  
Joyce Tabor  
Dee Teich  
Family Jewels  
The Afternoon  
TT Inspire  
Village Pomegranate  
Voila  
Wildtree

## 2016 REVENUE DISTRIBUTION







Mark your calendars for  
**May 24, 2017**



a 24-hour online charitable challenge - organized by the Omaha Community Foundation, will once again give area nonprofit organizations an opportunity to compete for matching funds.

The Castle Board and Staff would greatly appreciate your support on May 24.  
For more information visit [www.omahagives24.org](http://www.omahagives24.org).



3902 Davenport Street  
Omaha, NE 68131

NON-PROFIT ORG.  
U.S. POSTAGE  
PAID  
OMAHA, NE  
PERMIT NO. 1709

## SUPPORT THE CASTLE, BECOME A CASTLE FRIEND!

Help support the ongoing preservation and sharing of Omaha's Castle! By becoming a Castle Friend you help the legacy of George and Sarah Joslyn live on. Donations from Castle Friends help the Joslyn Castle Trust in our work to educate, inspire, restore and share with the community the Castle's rich history.

Castle Friends are recognized as those donating between \$25 and \$249. As a thank you for your support, Castle Friends are notified of special events, invited to a complimentary tour of the Castle on any tour Sunday, and are recognized in Castle Watch.

**Yes**, I would like to become a Castle Friend!

Name \_\_\_\_\_

Address \_\_\_\_\_

City \_\_\_\_\_ State \_\_\_\_\_ Zip \_\_\_\_\_

Email \_\_\_\_\_ Phone \_\_\_\_\_

Send this form with your contribution payable to Joslyn Castle Trust, 3902 Davenport Street in Omaha, NE 68131.  
Donations can be made online at [www.joslyncastle.com](http://www.joslyncastle.com) or by calling 402.595.2199.



[www.pinterest.com/  
joslyncastle](http://www.pinterest.com/joslyncastle)



[www.facebook.com/pages/  
Joslyn-Castle/  
300689759002](http://www.facebook.com/pages/Joslyn-Castle/300689759002)



[twitter.com/  
joslyncastle](http://twitter.com/joslyncastle)



[instagram.com/  
joslyncastle](http://instagram.com/joslyncastle)



[joslyncastleweddings.  
wordpress.com](http://joslyncastleweddings.wordpress.com)