

Castle WATCH

A Joslyn Castle Publication

Spring 2019



*Welcome
Home*



BOARD OF DIRECTORS

- Linda Matson Andersen
- Nate Bronson
Treasurer
- Ron Crampton
VP Grounds
- Polo Davis
- John Dechant
President
- Mary Jewell
Past President
- Sharon McGill
VP Grounds
- Mary Parrish
Secretary
- Edi Pierce
Guild Representative
- Ryan Sattler
- Matt Wegener
VP Buildings
- Sue Weidner
- Laura Worick

CASTLE GUILD BOARD

- Jeanne Daharsh
Treasurer
- Polo Davis
- Jackie Hoyt
VP Membership
- Annette Huff
VP Education
- Julie Jurgensen
VP Social
- Teddi Kennedy
Recording Secretary
- Maureen Lee
- Sharon McGill
- Jeanie Owen
Advisor
- Edi Pierce
President
- Francie Prier
- Jackie Quigley
Corresponding Secretary
- Laura Worick
Recording Secretary

ADVISORY COUNCIL

- David Ambrose
- Congressman Brad Ashford
- Doug Bisson
- George Haecker
- Tim Holland
- David Levy
- B. J. Reed
- Connie Spellman
- Bryan Zimmer

CASTLE STAFF

- Kelli Bello
Manager of Communications and Development
- Martin DiGiacomo
Facilities Operator
- Sidney Gnann
Executive Director
- Keith Hart
Tour and Membership Coordinator
- Mary Parrish
Accounts Payable & Reservations
- Janice Pickering
Manager of Programs and Events
- Jim Prohaska
Facilities Maintenance and Project Supervisor

TABLE OF CONTENTS

- A message from the Executive Director 2
- A message from the Board President 2
- Strategic Planning 2
- A message from the Guild President 3
- Grounds Report. 3
- New Staff Member, Jim Prohaska 3
- Joslyn Castle Friend, Diane Harder 4
- Please Welcome Our New Board Members. 4
- George Joslyn's Axioms of Business 5
- Meet Our Docent, Agnès Flamen. 5
- Year End Recap, Tours by the Numbers 6
- Volunteer at The Castle 6
- Murder Mystery 7
- Speakeasy Series 8
- A Mural Adventure Launches. 8
- Spring Lecture Series 9
- Castlepalooza 9
- Summer Fun Series. 9
- Summer Fete. 9
- Calendar of Upcoming Events 10
- Omaha Gives! Back Cover
- Become a Joslyn Castle Keyholder Back Cover



A MESSAGE FROM THE EXECUTIVE DIRECTOR, SIDNEY GNANN



Sarah Joslyn once said, "Because my home is a little bigger or contains a few more things than most Omaha homes does not mean that the welcome sign here is exclusive or warped or directed at only a certain set." Lately, we at the Castle have been thinking a great deal about these words from one of Omaha's most generous citizens. Specifically, we're asking ourselves, "How do we invite them in?"

We hope that you've noticed a renewed energy to share the Castle with the people of Omaha in the recent past. Several enhancements to our schedule have certainly added to the number of people that we've been able to meet. It is such a joy to share our history and fine craftsmanship with first time visitors. There are many from Omaha who have waited for years, not knowing that they could come in and see how the Joslyns lived.

The increased number of tour times and new programs also bring a substantial number of visitors who have been here before, but not for years. Some come back with fond childhood memories of visits to the Omaha Public Schools headquarters, others attend a program and

relay that they were married here years ago. These people treasure the opportunity to relive what the Castle meant to them years ago. I love hearing their stories.

The Castle matters to each of us, but for countless different reasons. For many it is a part of their history, a hallmark of home. For some, that first connection is yet to be formed. We know that when they get here the passion for this place will be ignited. Will you help us keep that passion alive among the people of Omaha?

Last year we were generously issued a challenge grant by the Dixon Family Foundation and the Sherwood Foundation. The challenge was to raise \$100,000 to match their combined contribution. With the help of the Lozier Foundation and many individual donors like you, we were successful in reaching that goal by raising contributions totaling \$106,231. Thank you for preserving the Joslyns' home. Thank you for following George and Sarah's example of giving generously to the community. In doing so you enable us to keep Sarah's welcome sign on display.

We have more meaningful memories to offer and treasures to share. We look forward to sharing them with you. You are welcome here.

A MESSAGE FROM BOARD PRESIDENT, JOHN DECHANT

As a kid growing up in Kansas, I felt a special sense of pride every time I watched *The Wizard of Oz*. When Dorothy Gale closed her eyes, tapped her heels together, and repeated, "There's no place like home," I felt especially close to where I was from. After all, her home was my home—and it's true, there was no place like it.

Having been a fixture on the Joslyn Castle estate now for nearly a decade, I feel the same way about this place. Between you and me, I'd like to think Dorothy would feel the same way about the Castle as she did about Kansas. Maybe more so. After all, the Castle has shown itself impervious to tornadoes (see Easter, 1913), which is more than you can say of her aunt's farmhouse, which wafted away in the Kansas sky. But I digress.

For me, Joslyn Castle has become like home, and I look forward to coming back every day. I'd like to think that fact would make Sarah Joslyn happy. She intended for her residence to be a home of sorts for the community. Sure, it was bigger than most, and more nicely furnished. But she never posted a sign that read "Keep Out." More

than a century later, her home is your home. Maybe you were married here or walk your dog on the grounds. Perhaps you attended one of the Castle's many wonderful programs. If you're reading this newsletter, that means at some point you developed an affinity for Sarah's Castle. I invite you to make it your home and invite others to do the same.



I'd like to recognize and welcome our newest board members: Sue Weidner, Ryan Sattler, and Edi Pierce. I look forward to working together over the coming months. And I hope to learn more about why the Castle means so much to each of you.

Spring is an exciting time at Joslyn Castle. The snow and ice melts away, vegetation starts to bloom, and this place really comes alive. Spend a little time here, and it will start to feel like home; I promise. Plus, name another place in Omaha with such a proven track record for dodging springtime tornadoes.

STRATEGIC PLANNING

The Joslyn Castle has begun the process of strategic planning! While we have already started an initiative of increasing public access to the Castle property through growing our program offerings and expanding tour times, we want to take a keen look at how we can enhance our service to the metro area.

The first step of this process has focused on collecting ideas. We've invited an array of people with and without direct connections to the Castle to talk about what role we should play. The format of these conversations is borrowed from Thomas Jefferson. In the last six months we've hosted a number of Jeffersonian dinners featuring moderated conversation about the future of the Castle. Our diverse group of guests included our immediate neighbors, local nonprofit

leaders, deeply engaged community leaders, young professionals, and even a couple of people who just moved to town. We intentionally selected a broad group.

Soon we'll move into our next step of information gathering. We'll take the ideas that were generously given and use them to build a survey that will be much more broadly distributed in Omaha.

Our goal is to hear the voices of the people. By casting a wide net, we know we'll uncover the thought trends which point to our future. Rest assured, preservation will remain at the heart of what we do. Once the data is in, we'll conduct a strategic planning session and build our plan. Stay tuned throughout the year for updates on our progress.

A MESSAGE FROM GUILD PRESIDENT, EDI PIERCE



It's always a pleasure to come to the Castle. I'm taken back in history to the beautiful setting, both inside and out. The Castle is a real treasure and I see it as a living tribute to Sarah, as a comparison to the Joslyn Art Museum being the memorial to George. The Castle is a real lady: refined, dignified, reserved, but always welcoming. I always wipe my feet before going in and feel Sarah's presence. The stories told in tours come alive.

As the incoming President of the Joslyn Castle Guild, I want to welcome everyone to join in the appreciation and preservation of this beautiful residence - Guild members, potential Guild members, the Castle staff, volunteers, and the general public. Christmastime and Year End holidays are especially welcoming with the Castle decorated professionally, and I commend all the workers who have made the Castle shine. But the sparkle shines the rest of the year, too.

Spring refreshes the Castle, and the garden welcomes visitors. We owe the beautiful gardens to the garden clubs and individuals who work tirelessly every year to welcome spring. My own Loveland Garden Club has had many projects on the grounds, so I have a special place in my heart for all these dedicated people. Inside I am particularly drawn to the orchids that Sarah loved in the special orchid window in the morning room and the conservatory near the fireplace. The orchids are no longer there, but you can imagine how they would

be. There are so many beautiful touches that make the Castle a welcoming home. All these splendors need time and money to keep them in top condition and we still have work to do.

Many projects inside the Castle are scheduled or being completed— floors refinished or replaced, rooms repainted, windows repaired and refinished. This lovely lady requires work to keep her looking her best. Many people contribute to the beauty of the Castle and the outside grounds take just as much effort. The Joslyn Castle grounds are amazing and take a group effort, too. An orchard is being established, beds of perennials as well as pots with annuals, welcoming birds, butterflies, and pollinators. I can just imagine what the glass house looked like before the 1913 tornado. And imagine the grounds in preparation for Violet's wedding. I hope you can imagine, too, and continue to help in the conservation of this remarkable Castle home.

Please visit the Castle and grounds and let it be your home as well.



GROUNDS REPORT

Happy Spring from the Garden Crew

Spring is a magical time of year at Joslyn Castle. The grounds are suddenly transformed into a little bit of heaven when the foliage and buds begin to appear and blooms burst forth in abundance from the many bulbs, shrubs, trees, and perennials on the property that have been in hibernation all winter.

Following is a short list of what you may see if you stop by for a visit:

- First hellebores in March.
- In April crocus, daffodils, tulips, scilla and muscari.
- Also the bleeding hearts, columbines, peonies, lilacs, and iris.
- Soon pasque flowers, pansies, magnolias, redbuds, crabapples and dogwood.
- And let's not forget the beautiful bridal wreath and weigela shrubs.

It will take several visits to catch this beautiful display of color and variety. So bundle up and come see the show!

WISHING YOU A HAPPY SPRING!

The Joslyn Castle volunteer gardeners: Diane, Jenn, Mark, Pam, Ron, and Sharon

NEW STAFF MEMBER, JIM PROHASKA



Please welcome Jim Prohaska to the Joslyn Castle Staff.

Jim has worked in the arts and cultural communities in Chicago, Phoenix, and Loveland, Colorado as well as Omaha, specializing in art installation, exhibit fabrication, facility maintenance, and collections care and maintenance. Jim has a degree in Sculpture from Arizona State University, has studied Fine Woodworking at the Chicago Bauhaus Academy, and has an extensive background in the construction trades.

Now settled in Omaha, he brings decades of experience to his position of Facility Maintenance and Project Supervisor at the historic Joslyn Castle. In his free time Jim is an avid eclectic music fan/collector and "part time" musician. He likes to spend time writing and recording music, being physically active, hiking and exploring nature with his son Zevin and his dog Izzy (weather permitting).

JOSLYN CASTLE *Friend*

DIANE HARDER, VOLUNTEER PAR EXCELLENCE



With her signature khaki sun hat peeking above the flowers, Diane Harder is a constant figure in our gardens from the first signs of spring to the last fallen leaf in autumn. She’s been a beloved presence in the gardens since she first joined the Castle family in 2010.

Diane is from Omaha and is a retired IT professional. In fact, she was one of the original team members who implemented the first computer system at Bergan Mercy Hospital in 1968. After retiring, her love for gardening grew and eventually led her to the Castle on a rainy morning with her garden club Le Jardin – and she’s been here ever since.

She says that interacting with Castle tourists as they explore the gardens is one of her favorite aspects of the work. She shares her love of the Castle with visitors from around the world, and encourages them to return to see the many growing seasons.

Diane was instrumental in the implementation of the Castle’s new pollinator gardens, and was a part of the team that earned the Castle the designation as a Certified Pollinator Habitat through the University of Nebraska. She’s proud of her work fostering these spaces for native species to thrive, saying she likes to “help Mother Nature out.”

One of her favorite memories at the Castle was a gardener appreciation dinner that was held on the lawn. Diane and her fellow volunteer gardeners enjoyed a beautiful picnic among their flowers at dusk – under twinkling lights.

When she is not lending her green thumb to the Castle, Diane is working her magic in her own garden. She also volunteers with Mosaic, where she leads a parents group of children with developmental disabilities.

If you see Diane in the gardens this spring, stop by to say hello! She’s always happy to talk shop.



Are you interested in becoming a Castle volunteer? We would love to have you! Contact Keith Hart at khart@joslyncastle.com.

PLEASE WELCOME OUR NEW BOARD MEMBERS

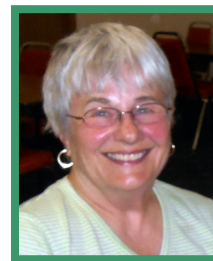


Ryan Sattler is a CPA with KPMG LLP in Omaha, specializing in federal tax. Ryan and his wife, Maryl, moved to Omaha in 2017 and have fallen in love with midtown, where they live with their six-month old son, Ethan, and three lovable, extremely energetic dogs. Ryan enjoys the history and architecture of historic buildings and homes, so he is especially excited to be involved with the Castle.

Sue Weidner hails from Sioux Falls, South Dakota. After earning a degree in Journalism and Advertising at the University of Nebraska-Lincoln, Sue worked for two different advertising agencies. J.L. Brandeis and Sons department stores brought her to Omaha to serve as the Director of Advertising. When the chain was sold in 1987, Sue joined colleagues to form Leopard, Inc. where she became the President and Managing Partner of the marketing firm. She and her business partner sold the agency in 2011. She has served as an adjunct instructor in the communication departments at Creighton

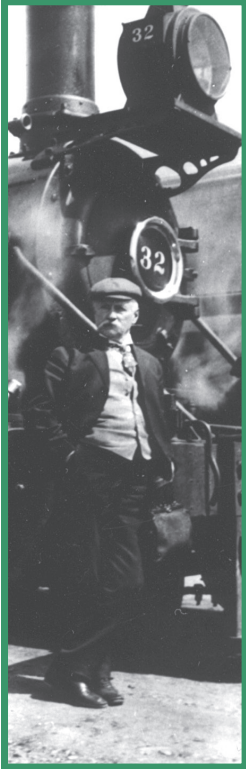


University and UNL in addition to now serving on the boards of the Nebraska Children’s Home Society, Why Arts, and the Munroe Meyer Community Advisory Council. She is also active at First United Methodist Church. Sue and her husband Tom are owners of Homer’s Music and have two children, Sarah and Matt.



Edi Pierce has joined the Board as the Joslyn Castle Guild representative. She grew up in Alliance, Nebraska, graduated from the University of Nebraska Lincoln, and taught in a Montessori School in Omaha before marrying a New Jersey-born captain in the Air Force, Phil Pierce. Phil is now the consulting arborist at the Castle. They have lived in south Sarpy County for almost 25 years, and have two grown sons, one in Ralston and the other including a granddaughter in Portland, Oregon. Edi is a member of the Loveland Garden Club and also enjoys reading and playing bridge. Her introduction to Joslyn Castle was when she attended meetings during the Omaha Public Schools tenure. She’s been in the Guild for 7+ years as the Vice President of Education, prior to becoming our current Guild President.

GEORGE JOSLYN'S AXIOMS OF BUSINESS



In honor of the upcoming Berkshire Hathaway weekend, Omaha's celebration of business and Warren Buffett, it's a great time to look back on advice from an earlier titan of business, our own George A. Joslyn

The following guiding principles were provided to the *Omaha World-Herald* by Joslyn for a profile about his rise to the top, and was originally published on Sept. 27, 1914.

George Joslyn's Axioms

- Work for and consider your customers' interests first, and you hold their patronage.
- Allow no competitor to better serve patrons than you serve them.
- If there is a legitimate doubt, give your patron the benefit of the doubt.
- Never agree to do something that is against good business policy and which you cannot do and do not intend to do.
- Never run up a white flag, but keep pushing upward and onward all the time.
- Be just to all your employees that they may be just to you.
- When financial disturbances darken the sky, reef your sails that your ship may not be blown on the rocks.
- Watch the little things; for many, little things make big things.
- Whenever possible make a friend of an enemy.

Berkshire Hathaway Weekend Public Tours

Want to learn more about Nebraska's first millionaires and philanthropists while exploring their incredible home? We're expanding our public tour offerings to welcome out-of-towners and locals alike!

Tour Schedule: May 3 – 5, Daily Tours – 1 p.m., 2 p.m., and 3 p.m.

Admission is \$8 for students/seniors/military and \$10 for adults. Doors open 15 minutes prior to tour start times, and no reservations are required.

MEET OUR DOCENT, AGNÈS FLAMEN

Agnès Flamen visited Joslyn Castle for the first time three years ago when she volunteered to chaperone a school field trip for one of her children. She immediately fell in love with the beauty of the Castle, and she expressed her interest in learning to give tours. She began training, and within just a few weeks she gave her first *Violet's World* tour to a group of school children.

Since that time Agnès has guided countless other children through these rooms as they learn about life in the Castle through *Violet's World* tours. Agnès has also become an anchor in the Castle's public tour schedule, dashing over on her lunch hour most Mondays to lead the 12:30 tour.

Agnès delights in the charm of old buildings and in sharing what she has learned about the Castle. She is inspired by the awe of children as they move from room to room and that every guest has a different perspective and different questions. "I love to meet with guests who are so curious," she says. "Sometimes I have to do further research."



Everybody has their favorite room or place in the Castle and Agnès says hers is the bathroom. "I always wonder what would go on in this very intimate place and I like to imagine what it would have looked like with the tub. I often tell the story that the tub was for Sarah and the shower for George, as the shower was too rough for ladies at that time." Even though some of the original fixtures are gone, Agnès likes to look at the huge old basins and imagine what it was like when a family lived there. "It makes me feel connected with Sarah and George."

In her other life, Agnès is a system engineer and designs software applications for Union Pacific. She is mom to four wonderful kids, two cats, and a Cavalier King Charles Spaniel. She is also a Girl Scout leader. Agnès was born in France and grew up in a western suburb of Paris where she spent her free time visiting museums, monuments, and castles. Agnès has lived in the United States for many years and her children were born here, but her household speaks French at home. Her children (ages 7, 11, 17, and 20) keep her very busy, so she reads and creates embroidery patterns while she's waiting for the kids at various activities. She quilts, sews, and has a huge garden where she grows her own vegetables and flowers.

Agnès says she loves coming to the Castle to work with the staff and our big family of docents. "I am fascinated by the diversity of people who have one thing in common: the love of this Castle." We think the Castle is fortunate to have Agnès on our team, sharing her knowledge and *joie de vivre* with our guests!



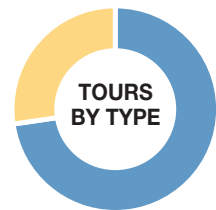
SNAPSHOT OF OUR 2018 GUESTS

COUNTRIES REPRESENTED

- Burkina Faso
 - Canada
 - China
 - England
 - France
 - Germany
 - Ghana
 - Iran
 - Kuwait
 - Mexico
 - New Zealand
 - Pakistan
 - Sudan
- And Forty-Six States*



- Children 31%
- Seniors/Military 17%
- Adults 52%



- Public Tours 73%
- Group Tours 27%



VOLUNTEER AT THE CASTLE

Joslyn Castle's many programs, events, and tours are possible through the support of a dedicated army of volunteers. Some of our volunteers serve as docents and lead public tours of the Castle. Others serve as hosts for events, provide administrative support, or perform other necessary tasks. In total our volunteers invested nearly 5,000 hours of service in 2018. These volunteers help keep the legacy of George and Sarah Joslyn alive, communicating their story of philanthropy to our many guests.

Are you looking for a fulfilling way to give back to your community? Join our volunteer team! People join our docent corps for many reasons: an interest in art, history, or architecture, or simply a desire to provide hospitality and help people have a rewarding visit to Joslyn Castle. Contact Keith Hart, Tour and Membership Coordinator, if you'd like to talk about volunteer options. Phone 402.595.1415 or email khart@joslyncastle.com.

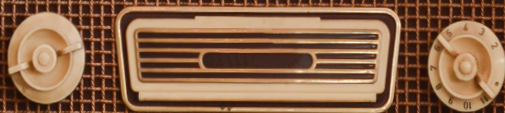
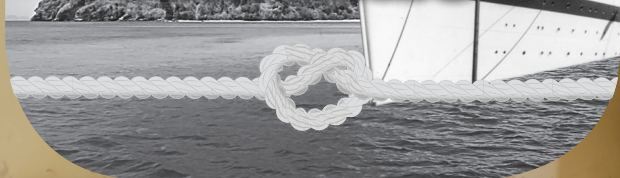


!WANTED!

Do you have any antique hand-painted plates that might need a new home in a Castle? We are looking for donations of authentic, mint condition, turn-of-the-last-century plates that could potentially be on display at Joslyn Castle. Phone the Castle at 402.595.2199 if you have something that might fit.



WHO DUNNIT? WHO TIED THE KNOT?



15TH ANNUAL JOSLYN CASTLE MURDER MYSTERY

FEBRUARY 28 | MARCH 1 | MARCH 2

PHOTOS COURTESY OF FOGARTY CREATIVE GROUP



2019 Joslyn Castle Murder Mystery
"Who Dun it? Who Tied the Knot?"
Cast and Crew . . .



2019 JOSLYN CASTLE SPEAKEASY SERIES

Cheers! The 2019 Joslyn Castle Speakeasy Series has once again been met with huge success. Now in its second year, this monthly meet up mixes some of Omaha's finest aficionados with our guests for a night of fun and education. attendees enjoyed exploring George Joslyn's man cave, shopping at The Simple Man pop up shop, and gathering in the Castle's Music Room for an evening of expert-led tastings and curated food pairings.



WITH US THIS YEAR ARE:

SERIES SPONSOR:

The Simple Man

CLASSIC COCKTAILS:

Tyler Schaeffer,
owner and bartender of the Inkwell lounge

Jared Clarke,
owner and Chef of Timber Wood Fire Bistro
and Railcar Modern American Kitchen

BOURBON:

Alzuri with Spirit World

WINE:

Alex P. Nelson,
shop manager of Howard Street Wine Merchant

Paul Kulik,
owner and Chef of LeBouillion

SCOTCH:

Kari Korenchen
of PROOF Whiskey Bar & Craft Cocktails
Miranda McQuillan, Certified Cheese Monger,
Miranda's Cheese Club



A MURAL ADVENTURE LAUNCHES

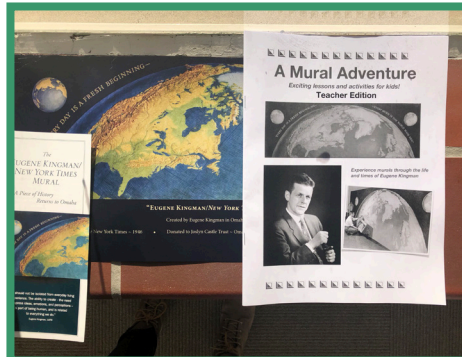
The Joslyn Castle is a proud steward of the incredible Eugene Kingman *New York Times* mural, which is an important part of local and national history. Our Eugene Kingman steering committee and a team of local educators spent 18 months carefully developing curriculum about the life of Eugene Kingman and the mural, all designed for Nebraska Third- and Fourth-graders. Materials are aligned with the Nebraska Department of Education Academic Content Standards for Social Studies, English Language Arts Standards, and Fine Arts.

Over 1,000 student packets were distributed at the first teacher orientation. All 16 teachers in the pilot group who attended our free teacher orientation received Student Workbooks, a flash drive with a complete Power Point, and mural posters.

This pilot group of teachers will implement the curriculum into their classrooms in 2019, and provide important feedback before we roll out the second phase of the educational initiative to more educators. We are proud of our role in educating local schoolchildren about the incredible part Omaha and the Joslyns play in our nation's artistic history.



Eugene and Elizabeth Kingman



Mural Training Materials



Training Class

SPRING LECTURE SERIES ORGANIC GARDENING

April 8

April 15

April 22

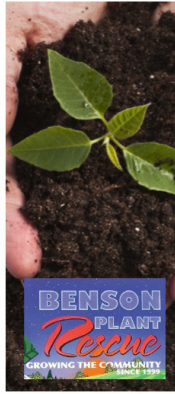
April 29



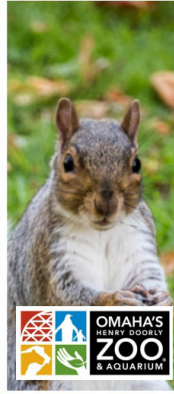
Pest Control



Container Gardens



Organic Soil



City Nature Challenge

Local experts share how we can be good environmental stewards in the garden.

Join us Mondays in April for this FREE educational series.

Events start at 6:30pm. Donations will be accepted to support the Joslyn Castle grounds.

JOIN US FOR AN EVENING OF FUN ON THE CASTLE GROUNDS

BACK IN 2019...
CASTLEPALOOZA!

JUNE 1ST
3PM-9PM

A FREE COMMUNITY
FESTIVAL



LIVE MUSIC | FOOD | BEER
VENDORS | FAMILY FUN

CONTACT KELLI FOR SPONSORSHIP OPPORTUNITIES
KBELLO@JOSLYNCastle.COM

SUMMER FUN SERIES

PRESENTED WITH



Back in 2019 is the Summer Fun Series, an all-ages educational experience presented on the beautiful grounds of the Joslyn Castle.

This year, we welcome the Papio-Missouri River National Resources District for a four-part series focusing on:

- June 6th—Birds (Taloned Teachers)
- June 13th—Insects (Incredible Insects)
- June 20th—Reptiles (Scaled Tails)
- June 27th—Aquatic Reptiles and Amphibians (Aquatic Adaptations)

These events are hands-on and great for the littlest members of your family.

Best of all, the entire series is presented FREE to the community!

Bring a blanket or a lawn chair and meet us on the southeast lawn.

Thursday evenings in June at 6:30 p.m.

Save the Date

Summer Fete

Hosted by Joslyn Castle

August 24, 2019

The Castle Guild invites you to join us for an evening under the stars as we raise funds for the preservation of our historic treasure. Party like a Joslyn with us by reserving today!

www.JoslynCastle.com

CALENDAR OF UPCOMING EVENTS

April 2019

April 8 Spring Lecture Series: Organic Pest Control with City Sprouts

6:30 p.m. – FREE Admission

April 13 Joslyn Castle Unlocked

Doors open at 5:30 p.m., dinner at 6 p.m.

April 15 Spring Lecture Series: Container Gardening with the Nebraska Extension

6:30 p.m. – FREE Admission

April 18 Speakeasy Series: Scotch Tasting

Doors open at 6:45 p.m., program at 7:00 p.m.

April 22 Spring Lecture Series: Organic Soil with Benson Plant Rescue

6:30 p.m. – FREE Admission

April 29 Spring Lecture Series: City Nature Challenge with the Omaha Zoo

6:30 p.m. – FREE Admission

May 2019

May 3-5 Daily Public Tours for Berkshire Hathaway Weekend

1 p.m., 2 p.m., and 3 p.m.

May 11 Joslyn Castle Unlocked

Doors open at 5:30 p.m., dinner at 6 p.m.

May 22 Omaha Gives! Coffee at the Castle Open House

7:00 a.m. to 9:00 a.m. – FREE Admission

June 2019

June 1 Castlepalooza Community Festival

3:00 p.m. – 9:00 p.m. – FREE Admission

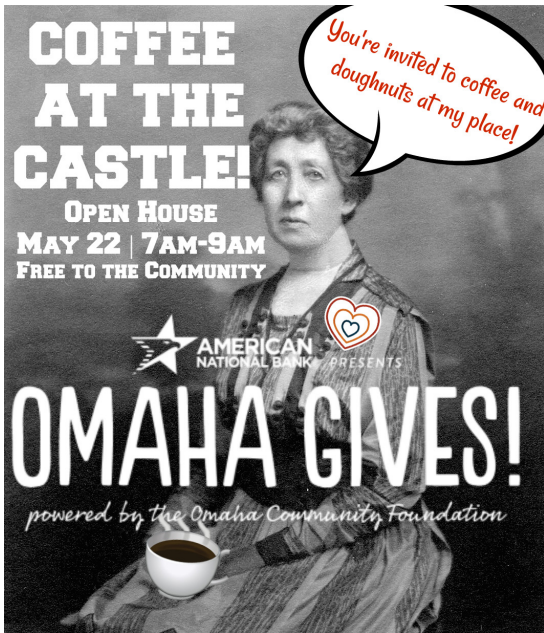
June 6, 13, 20, 27 Summer Fun Series: Papio-Missouri River NRD

Taloned Teachers, Incredible Insects, Scaled Tails, Aquatic Adaptations
6:30 p.m. Southeast lawn, Bring a chair or blanket – FREE admission

Public Tours

Every Monday at 10:30 a.m. and 12:30 p.m.

First and Third Sunday of every month at 1 p.m., 2 p.m., and 3 p.m.



3902 Davenport Street
Omaha, NE 68131



NON-PROFIT ORG.
U.S. POSTAGE
PAID
OMAHA, NE
PERMIT NO. 1709

BECOME A JOSLYN CASTLE KEYHOLDER TODAY!

Thanks to all who responded to our annual Joslyn Castle Keyholder 2019 Membership drive in January! Over 175 Keyholder registrations have been received so far. If you haven't responded yet, it's not too late!

Patron \$250 Household \$50 Individual \$30 Military/Veteran/Senior (60+) \$25

- 2019 Annual membership benefits include:**
- 10% discount on Castle programs
 - Early registration to sold-out events
 - Always FREE admission to public tours
 - 10% discount in the Castle gift shop
 - Recognition in *Castle Watch* (Patron Level Membership)

In addition, **Keyholders** will receive bonus benefits and special offers throughout the year! Sign up to become a Joslyn Castle Keyholder online at www.joslyncastle.com or fill out and return the form below.

Name: _____

If selecting a Household Membership, please list the names of the family members (up to 4 total) in your household.

1. _____ 3. _____
2. _____ 4. _____

Address: _____ City: _____ State: _____ Zip: _____

Email: _____ Phone: _____

Payment Information

Will be paying by credit card. Credit Card #: _____

Exp: _____ CVC Code: _____ Billing Zip Code: _____

My check is enclosed. *Send this form with your check payable to:* Joslyn Castle | 3902 Davenport St. | Omaha, NE 68131